

# Kalinda School Newsletter

Merrigal Street, Griffith NSW 2680

kalinda-s.schools@det.nsw.edu.au

Principal: Mrs Angela Sampson

Week 4 Term 2, 2018

Wednesday 23<sup>rd</sup> May, 2018



Congratulations to the students in Years 3, 5 and 7 who sat NAPLAN last week. We anticipate student results will be sent to the school in October, which will then be forwarded on to parents and carers.



Variety Bash is only 1 day away. Families should have received their complimentary breakfast wristbands yesterday. We strongly encourage everyone to have an early start to the day, come on down to school and celebrate our students through the Variety Bash. Breakfast will be served from 6:30am. Students are encouraged to wear full school uniform and please ensure you supervise your children. Supervision by staff will commence at 8:40am.

We cannot thank the local businesses enough for their support in donations to make this event possible. We look forward to a wonderful day tomorrow morning.

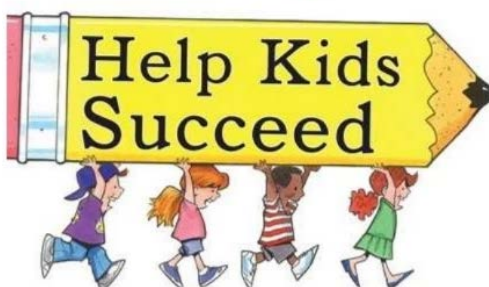
## Positive Behaviour for Learning:

Congratulations to PBL raffle winners this week, Angus, Zac, Waylan and Erin.

Our Values Award this week was given to Zac for being Responsible by 'doing his job'.



Grow Professionally for Kids



**Professional Learning:** Last week Miss Cliff and Mrs Sampson attended the Australian Special Education Principal Association National Conference in Adelaide. They participated in a range of workshops specific for schools for students with disabilities. Some workshops were;

- Creating Mental Wealth; Policy, Pedagogy and Practice in Promoting Emotional Well-Being in Schools – Professor Barry Carpenter
- Power and Love in Teaching and Leadership – Steve Munby
- Achieving Greater School Engagement Through Autism Mentoring – Chris Varney, Founder and Chief Enabling Officer, I CAN Network

**Kalinda School would like to welcome Ryley back. He is a valued member of Jade Class.**



Respectful

Responsible

Inclusive



# Variety Bash Fun with ONYX



*Respectful*

*Responsible*

*Inclusive*

# Kalinda School Term 2 Calendar, 2018

	Week	Monday	Tuesday	Wednesday	Thursday	Friday	Sat/Sun
May	4	21 RDA Ruby / Jade  Variety Bash Briefing meeting for	22 PBL Meeting 8:30am	23 Year 10 & 11 Vaccinations  Assembly Cancelled	24 Variety Bash from 6:30am	25 Assistant Principal Network Day Life Education Van money and note due today	26/27
May/June	5	28 RDA Ruby	29 Musica Viva performance and workshop	30 AECG Meeting at GPS 2pm	31	1 Yarn Up 1pm Kalinda School	2/3
June	6	4 Life Education Van for Kinder – Yr 6  P&C Meeting 7pm  RDA Ruby/ Jade	5 RDA Malachite / Jade	6 Learning Support Team Meeting 9:30am  Assembly 2:40pm	7	8	9/10
June	7	11 Public Holiday Queen's Birthday	12 RDA Malachite / Jade	13	14	15 Fire Wise visit from Rural Fire Service 2pm	16/17
June	8	18 RDA Ruby / Jade	19 PBL meeting 8:30am Aboriginal Performance at GPS RDA Malachite / Jade	20 Learning Support Team Meeting 9:30am  Assembly 2:40pm	21	22	23/24
June	9	25 RDA Ruby/ Jade	26 RDA Malachite / Jade	27 AECG Meeting at GPS 2pm Review Meetings from 3:30pm	28	29	30/1
July <b>NAIDOC Week</b>	10	2 RDA Ruby / Jade	3 RDA Malachite / Jade	4 Learning Support Team Meeting 9:30am  Assembly 2:40pm	5 PBL Rewards Day Pyjama and movie day	6 Last of Term 2	7/8
July		School Holidays					14/15
July		School Holidays					21/11
July TERM 3	1	23 Staff Development Day	24 Students Return	25 AECG Meeting Griffith PS 2pm	26	27 National Tree Day	28/29
July / August	2	30	31	1 Learning Support Team Meeting 9:30am  Assembly 2:40pm	2	3 Jeans for Genes Day	4/5

*Respectful*

*Responsible*

*Inclusive*

*Hey, come and*

# JOIN OUR MOB

*a deadly employment opportunity for Aboriginal people in a school administrative and support staff team*

*friendly environment*

*new skills*

*rewarding career*

*great opportunities*

Artwork: Judy Shepard

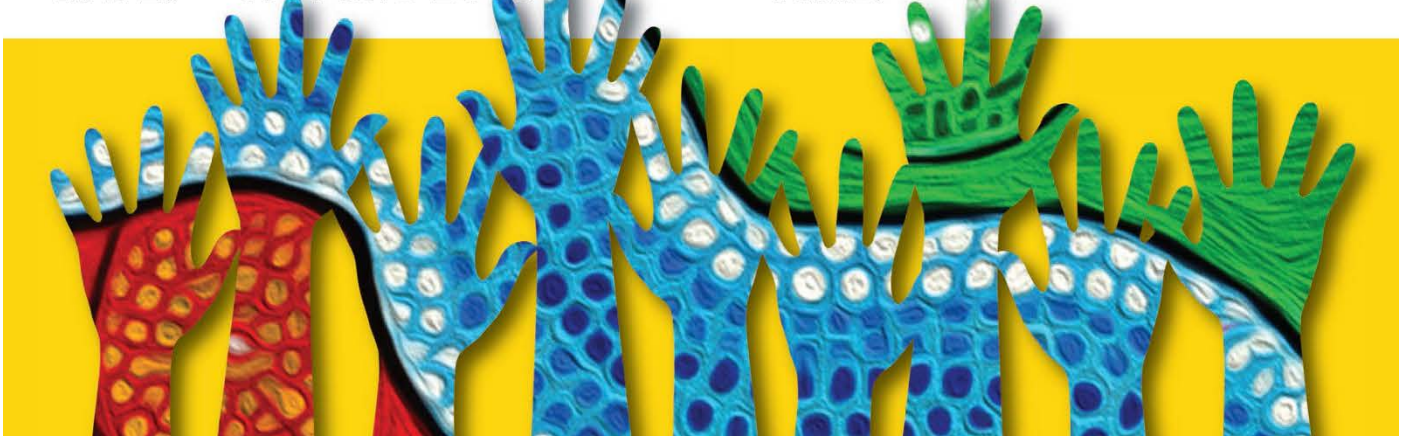
*have a yarn with us*

**SCHOOL:** Kalinda School

**POSITION:** School Learning Support Officer - Aboriginal Student

**DATE:** 1st June 2018

**TIME:** 1 PM



grab some information flyers from the Yarn Up or contact  
Aboriginal Employment and Career Initiatives, People and Careers  
[aboriginal.employment@det.nsw.edu.au](mailto:aboriginal.employment@det.nsw.edu.au)  
02 9836 9187



Education &  
Communities

*Respectful*

*Responsible*

*Inclusive*